

Plenum box for air valve

FLX-PLO/FLX-PRO



Description

FLX-PLO / FLX-PRO plenum boxes are components of the FLX-REKU system intended for domestic mechanical ventilation systems, also known as mechanical ventilation heat recovery (MVHR) or heat recovery ventilation.

The low profile plenum boxes require less installation space than standard solutions, which is very convenient when they should not be prominent once concealed. This advantage helps free up usable indoor area.

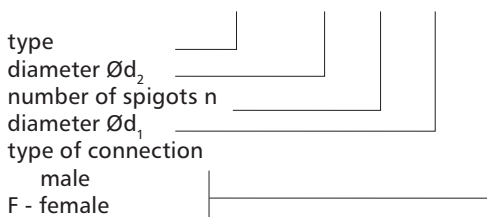
FLX-PLO plenum boxes are made of galvanized steel sheet. Plenum boxes made from stainless steel are available on request.

Available also insulated plenum box version - **FLX-PLI** and **FLX-PRI**. These plenum boxes have inside a insulation lining made from 9 mm thick rubber foam.

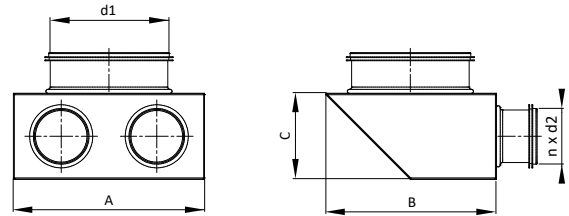
FLX-PLO plenum boxes are equipped with duct connection spigot $\varnothing d_2$ with a EPDM seal – this type of connection with FLX-HDPE ducting is airtight and easy to install.

Product code example

Product code **FLX-PLO - 75 - 2 - 150 - F**



Dimensions



Product code	A [mm]	B [mm]	C [mm]	d_1 [mm]	n [szt.]	d_2 [mm]
FLX-PRO-63-1- d_1	180	180	75	80-160	1	63
FLX-PRO-63-2- d_1	180	180	75	80-160	2	63
FLX-PRO-63-3- d_1	180	270	75	80-160	3	63
FLX-PLO-75-1- d_1	180	200	90	80-160	1	63
FLX-PLO-75-2- d_1	180	200	90	80-160	2	63
FLX-PLO-75-3- d_1	180	300	90	80-160	3	63
FLX-PLO-90-1- d_1	180	200	90	80-160	1	75
FLX-PLO-90-2- d_1	180	200	90	80-160	2	75
FLX-PLO-90-3- d_1	180	300	90	80-160	3	75

Duct connection spigot d_1 : 80, 100, 125, 150, 160 mm

FLX-CS-PVC end caps fit connection spigots of FLX-PLO-75 and FLX-PLO-90 plenum boxes.



FLX-CF-PVC end caps fit (inside) duct connection spigots of FLX-PRO-63 plenum boxes.

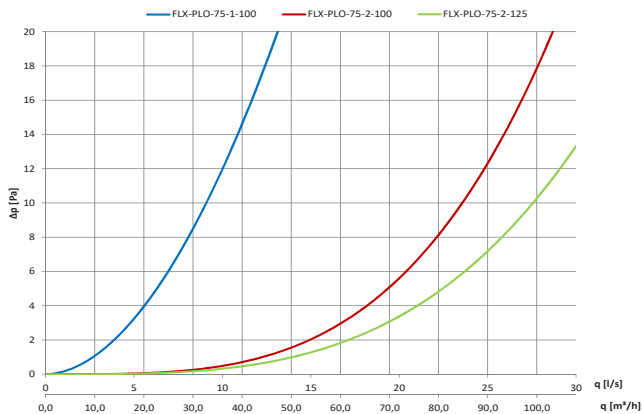


Plenum box for air valve

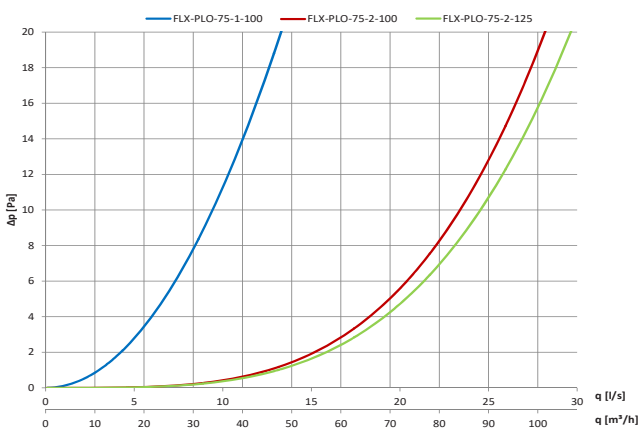
FLX-PLO/FLX-PRO

Technical data

Pressure drop charts for the supply air plenum box: Ø100, Ø125

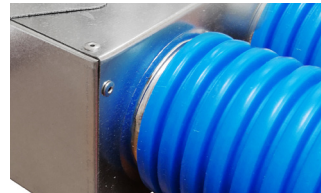


Pressure drop charts for the exhaust air plenum box: Ø100, Ø125



Types of plenum boxes

FLX-PLO plenum box



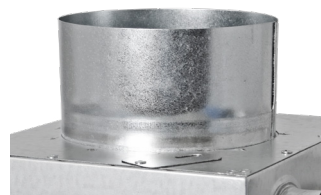
FLX-PRO plenum box (spigot - 63mm only)



FLX-PLO-75-2-160 male connection spigot Ød₁ with a seal



FLX-PLO-75-2-160-F female connection spigot Ød₁



On request, plenum boxes can be supplied with additional safety clips, that secure the semi-rigid duct in the place and protect it from disconnecting: FLX-PLO-75-...-H

